

Premium Lotion Base CM & Polymer SP Thickener

Lotion Base CM is a cold process product. The lotion base kit consists of two products: Lotion Base CM - a water-thin cream base and Polymer SP - a cosmetic grade thickener, which has been pre-mixed with an emulsifier. No wax or alcohol!

This kit can formulate:

- A sprayable/light lotion
- Normal Lotion
- Very Light Cream
- Night Cream



Equipment Needed

Spoons for stirring
Rubber gloves
Large stainless steel bowl
Measuring cups/bowls to hold weighted ingredients
Hand mixer or a stick blender

[Scale](#)

Ingredients Needed

Distilled Water

[Lotion Base CM](#)

[Polymer SP Thickener](#)

[Sweet Almond Oil](#)
[Germaben II™ Preservative](#)
[Fragrance Oil of your choice](#)
[Gel Colorant of your choice](#)



IMPORTANT TIPS:

- It's important to ensure that everything is properly clean and sterilized. Metal and Glass mixing bowls and metal mixing utensils are preferred.
- Measure all ingredients by **weight**, using a digital scale.
- Pre-weigh all ingredients in the quantities listed in either ounces or grams. This tutorial will be making a Quart batch. Click [here](#) for ½ gallon and gallon batch amounts.

PHASE 1: Pre-mixing the Lotion Base CM

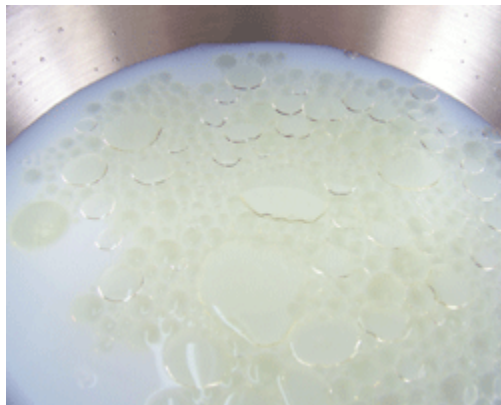
Step 1: Add 28 ounces of distilled water to a stainless steel bowl.



Step 2: Add 3.25 ounces of the Lotion Base CM to your bowl.



Step 3: Add 2 ounces of Sweet Almond Oil to your bowl.



Step 4: Stir using gentle agitation with a spoon for 2 -3 minutes. The oil and water will not emulsify, but you want the mixture to be well blended.



PHASE 2: Preparing the Polymer SP

The thickener concentrate, Polymer SP, is added to your blended lotion base at levels of 3% - 9% to achieve a viscosity from very thin, like a body mist, to very thick, like a night cream.

- Stir your container of Polymer SP very well before adding.
- Measure out your Polymer SP. If you are unsure as to the amount you need to achieve the consistency you want, start with 3% and work your way up until you achieve your desired viscosity. You can always add more Polymer SP to increase thickness, but if you start TOO THICK, you will need to prepare another Phase 1 batch to re-balance your mixture.
- To achieve a medium lotion as pictured in this tutorial, 6% (2 oz) of Polymer SP is added to the mixture.

PHASE 3: Blending

Step 5: Slowly pour a stream of your Polymer SP into your **Phase 1 base**, while continuously blending. You will notice the lotion start to thicken after mixing for about 2 minutes. Continue mixing for a full 5 minutes to ensure that Polymer SP is completely dispersed to activate the emulsifier and the thickener.





Step 6: When satisfied with your base consistency, add:

- 1% (0.34 oz) of Germaben II Preservative. This preservative can be used in a range of 0.3% - 1%.
- 1% (0.34 oz) Fragrance Oil.
- 7 drops of your favorite Gel Colorant





Step 7: Blend all ingredients well and you're ready to package!



