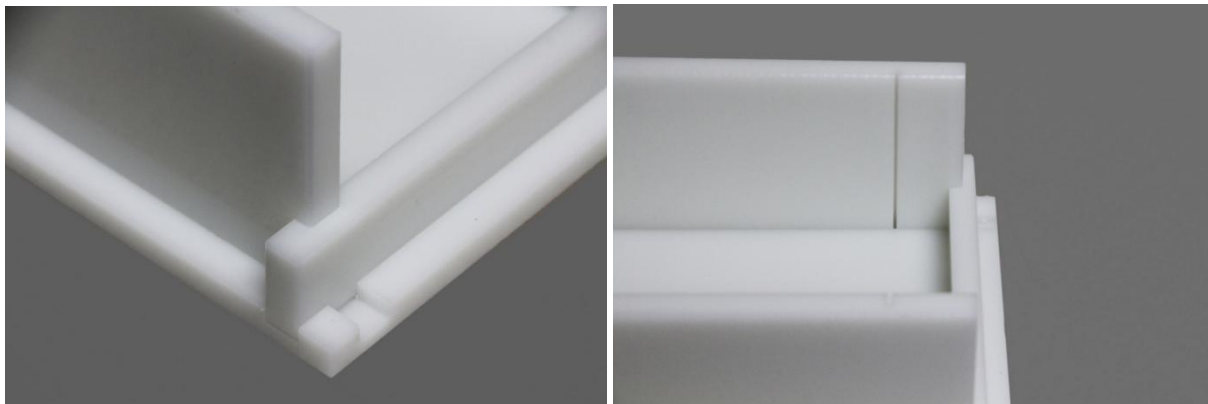


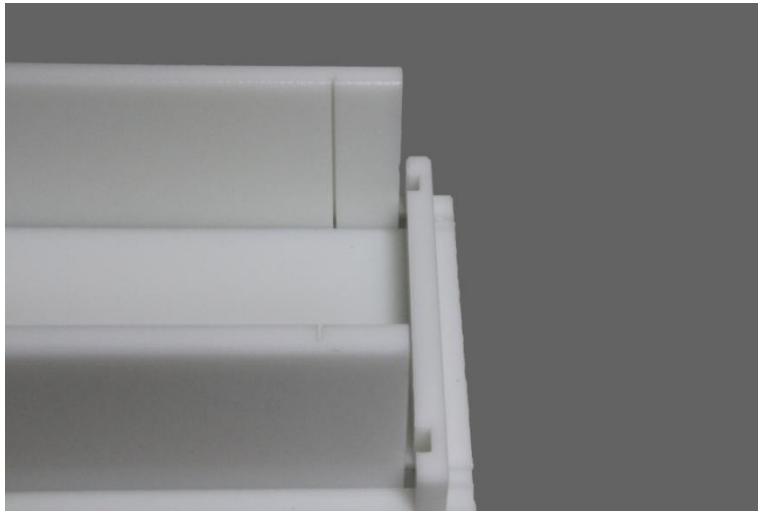
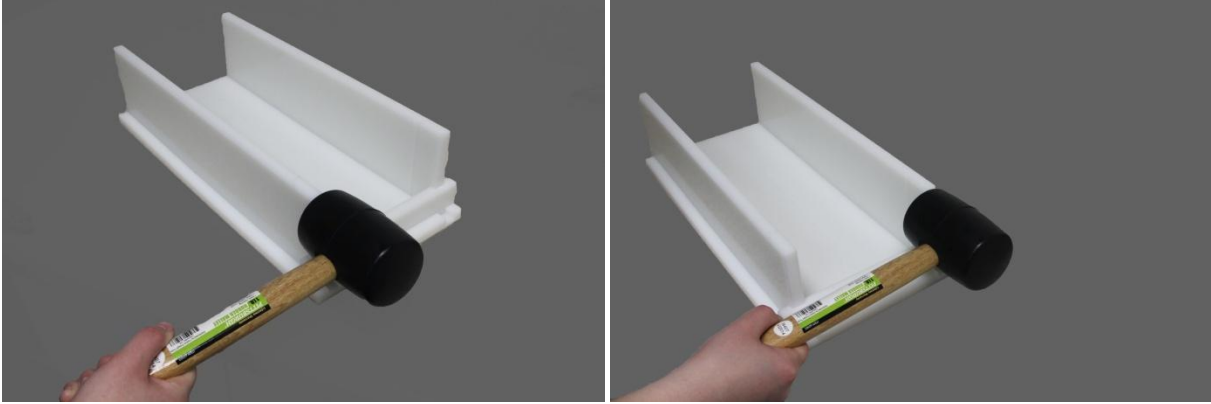
## Adjusting Your Precision Economy Soap Cutter



Your [Precision Economy Soap Cutter](#) comes assembled with two removable side pieces, a removable front cutter fence, a stainless steel blade, and a rubber mallet. It allows you to slice loaf soaps into either 1 inch or 1 ¼ inch thick bars by simply adjusting the front cutter fence. To learn how to do this, follow the steps below!



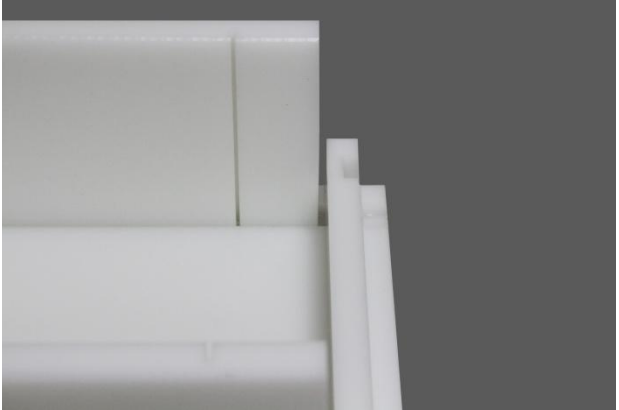
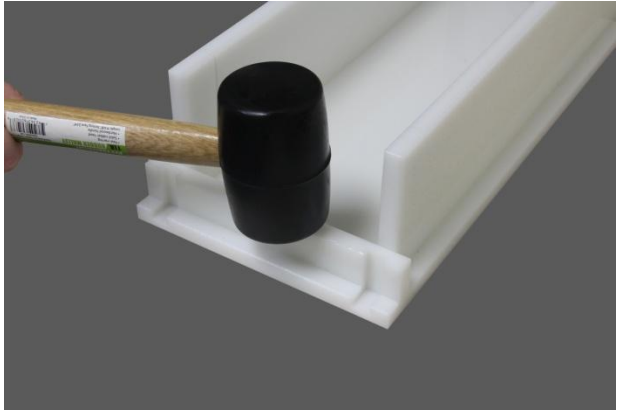
1. Use the mallet to tap the two side pieces of your cutter until they are no longer touching the front cutter fence.



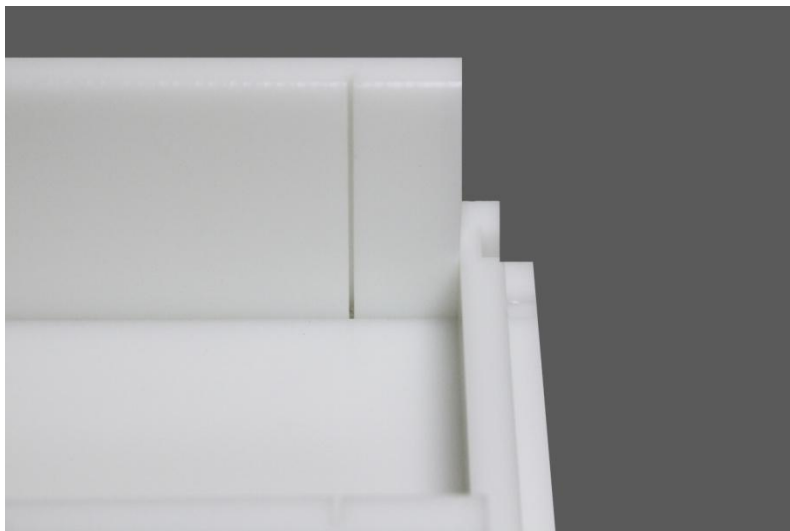
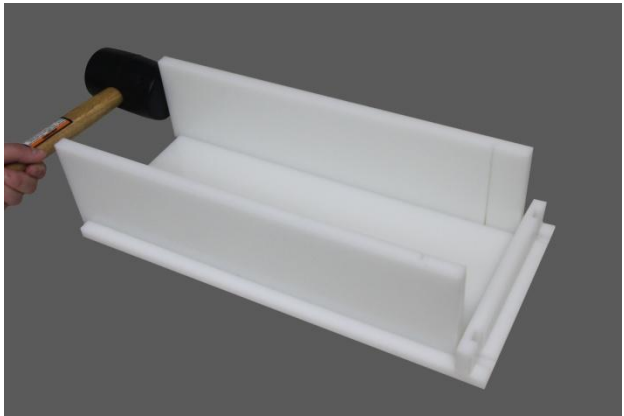
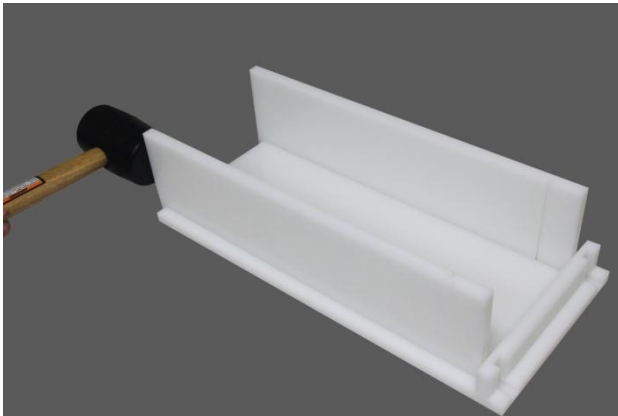
2. Use the metal key from your Precision Loaf Mold or another flat object to pry the front cutter fence up and out. You may also be able to do this with just your hands.



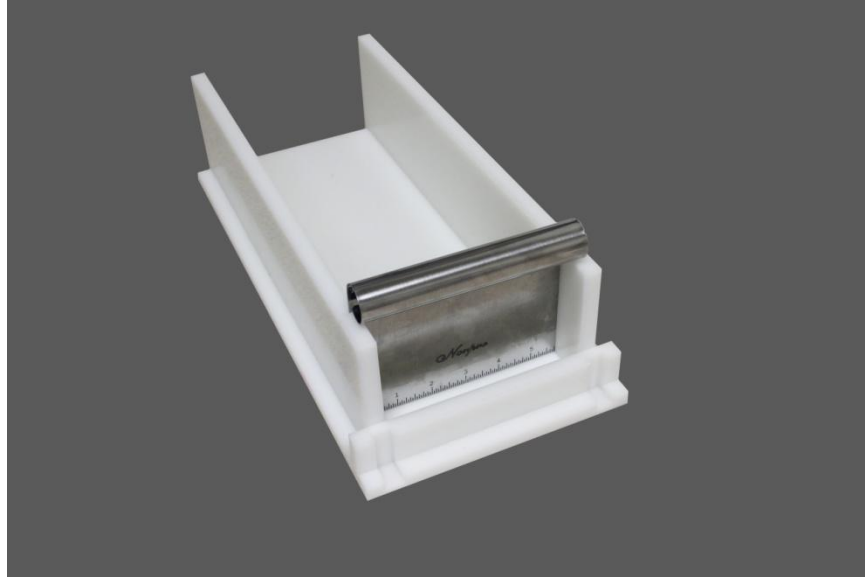
3. Flip the front cutter fence over so that the two grooves are facing in the opposite direction and use the mallet to make sure it is securely in the groove.



4. Use the mallet to tap the two side pieces of your cutter until they are touching the front cutter fence.



5. Replace the cutter blade



Now your Precision Economy Soap Cutter has been switched from a 1 inch cut to a 1 ¼ inch cut and is ready to use! To change it back, simply repeat these steps.